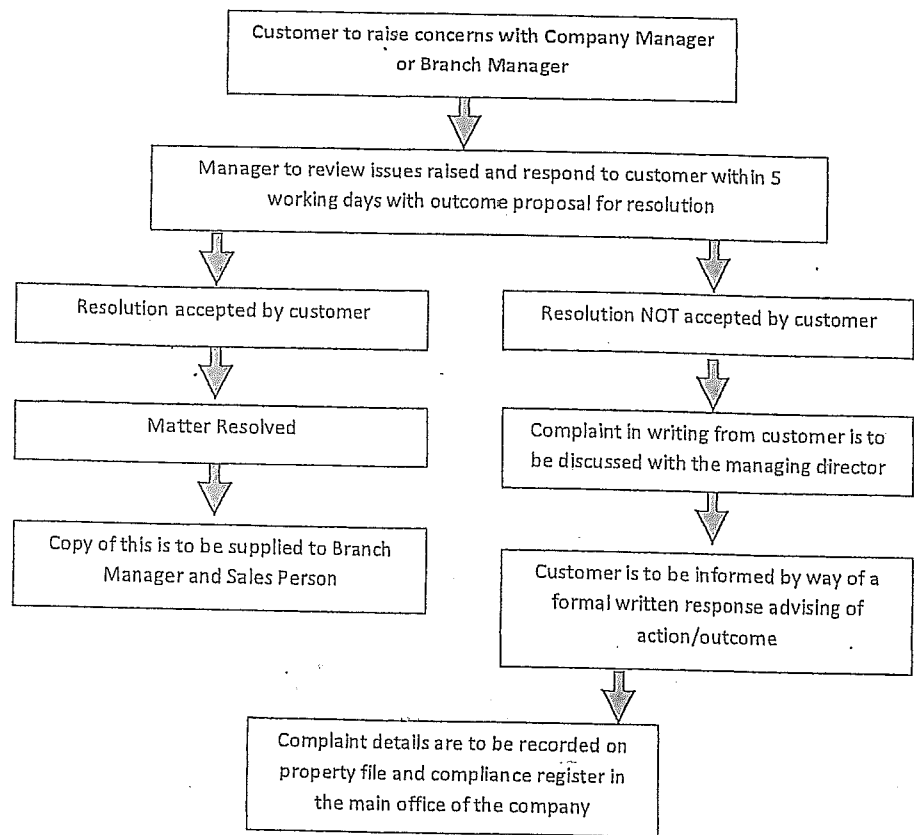


Southland Real Estate Ltd

In House Complaint Process

(Real Estate Agents Act 2008 – Professional Conduct and Client Care Rules)



Note: This process does not include the matter from being referred to the Real Estate Agents Authority. The Authority may be contacted at:

C/o P.O. Box 25-063
Wellington 6146
New Zealand
www.reaa.govt.nz